

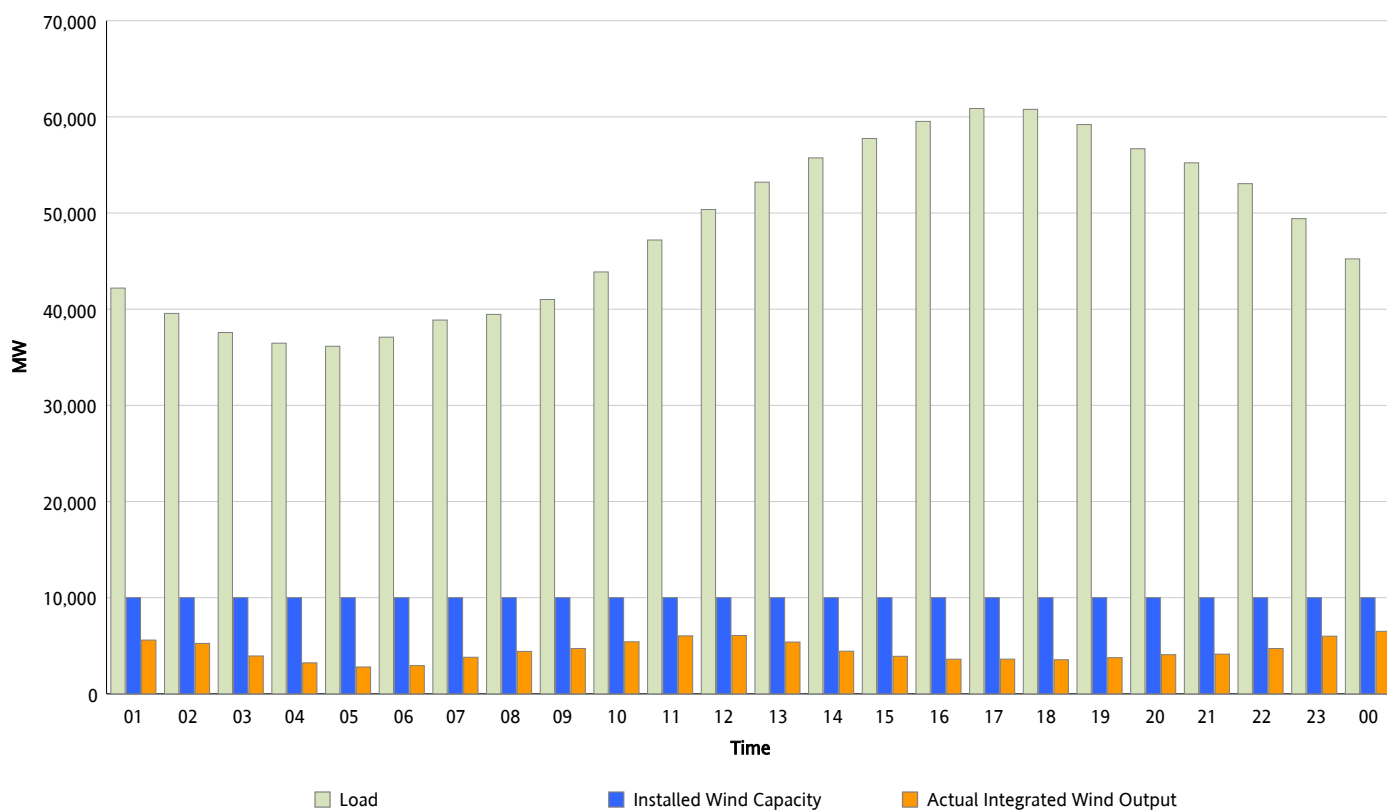


ERCOT Grid Operations

Wind Integration Report : 08/15/2012

Peak Load	60,871 MW
Load Peak Hour (HE)	17
Wind Over Peak	3,614 MW
Wind Record 06/19/12	8,368 MW
Max Wind Value*	6,565 MW
Wind Peak Time	23:59
Wind Integration %	15.12 %

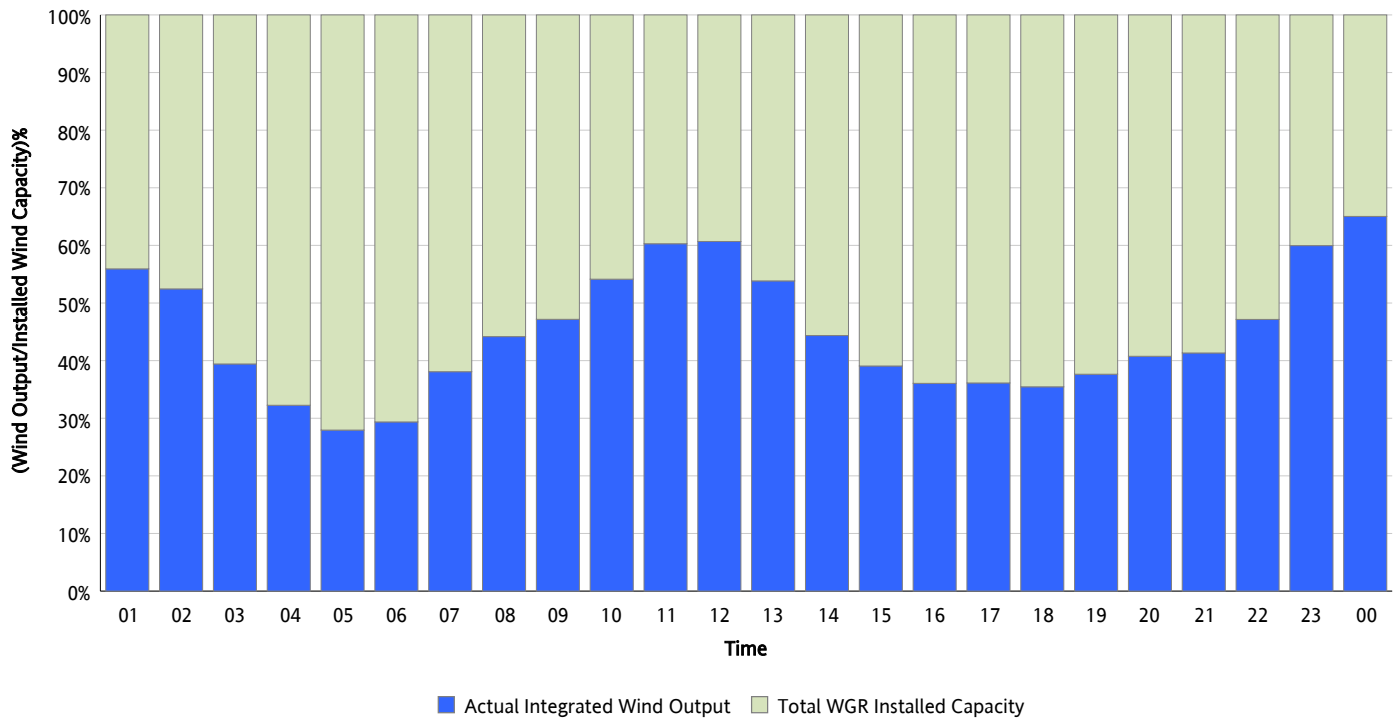
Hourly Average Actual Load vs. Actual Wind Output
08/15/2012



** Wind Record and Wind Max represent instantaneous values and the rest of the values are integrated over the hour*

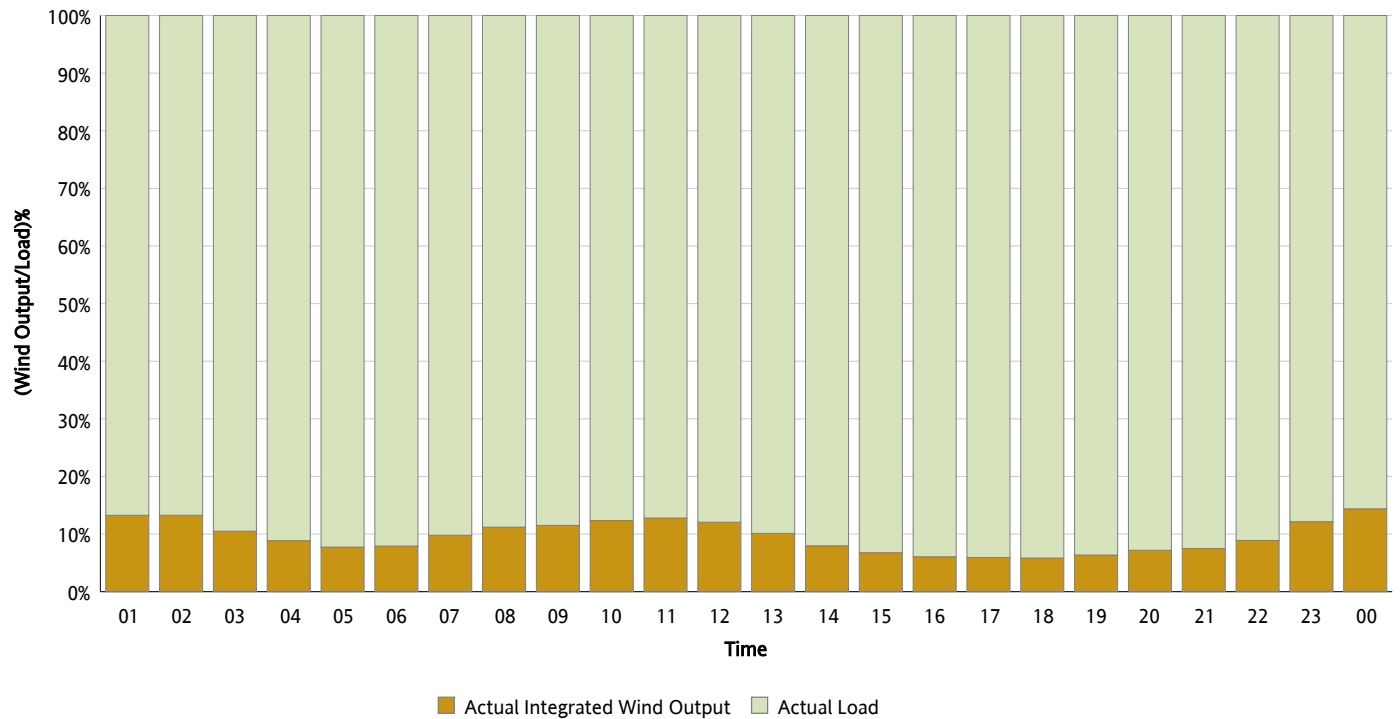
Actual Wind Output as a Percentage of the Total Installed Wind Capacity

08/15/2012



Actual Wind Output as a Percentage of the ERCOT Load

08/15/2012



ERCOT Load vs. Actual Wind Output

08/08/2012 - 08/15/2012

